

# \$1,120,000 - Lot 1b Ashgrove Road, Nicholasville

MLS® #24002749

**\$1,120,000**

0 Bedroom, 0.00 Bathroom,  
Land - Farm/Land on 32 Acres

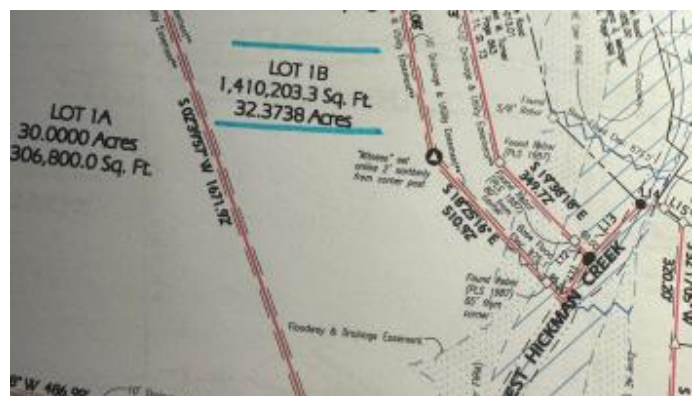
Rural, Nicholasville, KY

Beautiful 32 acres on Ashgrove Rd just off US 27 Lexington Rd near Brannon Crossing. Perfect place your building your dream home . Property has potential of residential development.



## Essential Information

MLS® #	24002749
Price	\$1,120,000
Bathrooms	0.00
Acres	32.37
Type	Land - Farm/Land
Sub-Type	Farm
Status	Active



## Community Information

Address	Lot 1b Ashgrove Road
Area	Jessamine County
Subdivision	Rural
City	Nicholasville
County	Jessamine
State	KY
Zip Code	40356

## Amenities

View	Neighborhood, Rural, Farm
------	---------------------------

## Exterior

Lot Description	Cleared, Gently Rolling, Level, Wooded, Bottom Land, Floodplain
-----------------	---

## School Information

High

East Jess HS

### **Additional Information**

Date Listed February 14th, 2024

Zoning AR

### **Listing Details**

Listing Office Charlene Clark & Associates, Llc



The data relating to real estate for sale on this website comes in part from the Internet Data Exchange Program of the Bluegrass Realtors Multiple Listing Service. Real estate listings held by IDX Brokerage firms other than RE/Max Properties East are marked with the IDX logo or the IDX thumbnail logo and detailed information about them includes the name of the listing IDX Brokers. Information Deemed Reliable but Not GuaranteedÂ©2022 Bluegrass Realtors Multiple Listing Service. All rights reserved.