

\$14,848,000 - 901 Sulphur Well Pike, Nicholasville

MLS® #24007700

\$14,848,000

0 Bedroom, 0.00 Bathroom, 4,000 sqft

Land - Farm/Land on 464 Acres

Rural, Nicholasville, KY

Apprx 464 acres of prime development land bordered by city on three sides and adjacent to E Jessamine Schools. Gently rolling with lovely views. Bypass currently being constructed through this property. Property may be purchased as a whole apprx 464 acres or as two separate parcels of apprx. 170 and 294 acres each, (see additional listings) to the left and right sides of the bypass that bisects the property. This property also connects to Union Mill Rd. Tenant occupied please make an appointment.

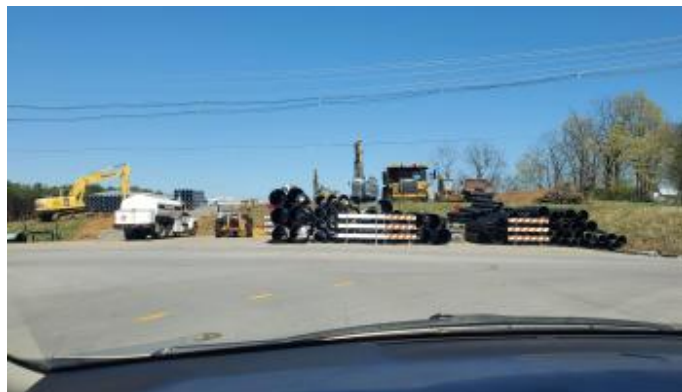
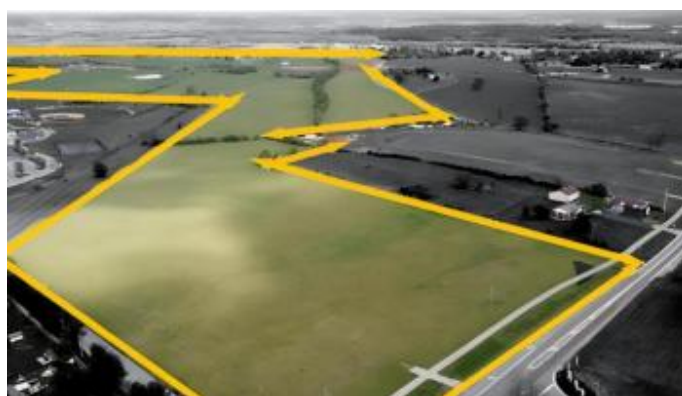
Built in 1920

Essential Information

MLS® #	24007700
Price	\$14,848,000
Bathrooms	0.00
Square Footage	4,000
Acres	464.00
Year Built	1920
Type	Land - Farm/Land
Sub-Type	Lot
Style	Colonial
Status	Active

Community Information

Address	901 Sulphur Well Pike
Area	Jessamine County
Subdivision	Rural
City	Nicholasville



County	Jessamine
State	KY
Zip Code	40356

Amenities

View	Farm
------	------

Exterior

Lot Description	Gently Rolling
-----------------	----------------

School Information

District	Jessamine County
High	East Jess HS

Additional Information

Date Listed	April 22nd, 2024
Zoning	AR

Listing Details

Listing Office	Berkshire Hathaway De Movellan Properties
----------------	---



The data relating to real estate for sale on this website comes in part from the Internet Data Exchange Program of the Bluegrass Realtors Multiple Listing Service. Real estate listings held by IDX Brokerage firms other than RE/Max Properties East are marked with the IDX logo or the IDX thumbnail logo and detailed information about them includes the name of the listing IDX Brokers. Information Deemed Reliable but Not GuaranteedÂ©2022 Bluegrass Realtors Multiple Listing Service. All rights reserved.