

\$425,000 - 485 McCullough Lane, Winchester

MLS® #25007660

\$425,000

3 Bedroom, 2.00 Bathroom, 2,120 sqft
Residential on 6 Acres

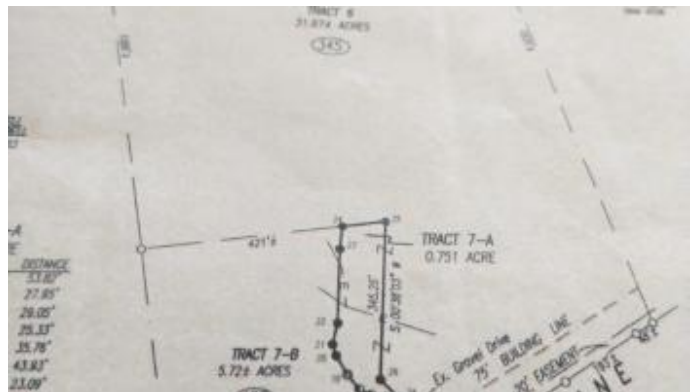
Rural, Winchester, KY

The Homestead you have been looking for. Farmhouse in the country. This beauty is just 6 miles from the interstate. Spacious 5.72 acres on this mini farm. It is located at the end of McCullough Lane. This three bedroom 2 bath home has 2,120 square feet. There is a beautiful 9 feet deep inground pool. The pool had a new liner and equipment installed 3 years ago. Inside you will find 3 fireplaces to save on utilities. Outside you will find buildings that are fully insulated, on their own 200 amp service with separate meter, and reinforced concrete floors. Floors can easily handle heavy equipment. The first building 50X60, has two overhead doors, both 10X10. One has a loading dock. The second building is 40X60 with a 12X12 overhead door. At the front of the property there is 4 car run-in shed/garage that is 24X41. There is a 240V plug for vehicle charging. The laundry room covers a deep water that used to supply water. Schedule a tour of this beautiful farm that has so much to offer. Buying As Is. Must close in 45 days. Selling by auction online only. Go to goochsell.com to find terms and conditions. Rony Jo Ballou Principal Auctioneer.

Built in 1950

Essential Information

| | |
|----------|-----------|
| MLS® # | 25007660 |
| Price | \$425,000 |
| Bedrooms | 3 |



| | |
|----------------|-------------------------|
| Bathrooms | 2.00 |
| Full Baths | 2 |
| Square Footage | 2,120 |
| Acres | 5.72 |
| Year Built | 1950 |
| Type | Residential |
| Sub-Type | Single Family Residence |
| Style | Ranch |
| Status | Active |

Community Information

| | |
|-------------|---------------------|
| Address | 485 Mccullough Lane |
| Area | 007 - Clark County |
| Subdivision | Rural |
| City | Winchester |
| County | Clark |
| State | KY |
| Zip Code | 40391 |

Amenities

| | |
|------|------|
| View | Farm |
|------|------|

Interior

| | |
|---------|---|
| Heating | Electric, Wood Stove, Heat Pump, Forced Air |
| Cooling | Heat Pump, Electric |
| Stories | One |

Exterior

| | |
|--------------|-------------|
| Construction | Stucco |
| Foundation | Block, Slab |

School Information

| | |
|------------|------------------|
| District | Clark County - 7 |
| Elementary | Shearer |
| Middle | Robert Campbell |
| High | GRC |

Additional Information

| | |
|-------------|------------------|
| Date Listed | April 16th, 2025 |
|-------------|------------------|

Listing Details

Listing Office

Dream Maker Realty, Llc



The data relating to real estate for sale on this website comes in part from the Internet Data Exchange Program of the Bluegrass Realtors Multiple Listing Service. Real estate listings held by IDX Brokerage firms other than RE/Max Properties East are marked with the IDX logo or the IDX thumbnail logo and detailed information about them includes the name of the listing IDX Brokers. Information Deemed Reliable but Not GuaranteedÂ©2022 Bluegrass Realtors Multiple Listing Service. All rights reserved.