

\$528,000 - 2639 Weisenberger Mill Road, Midway

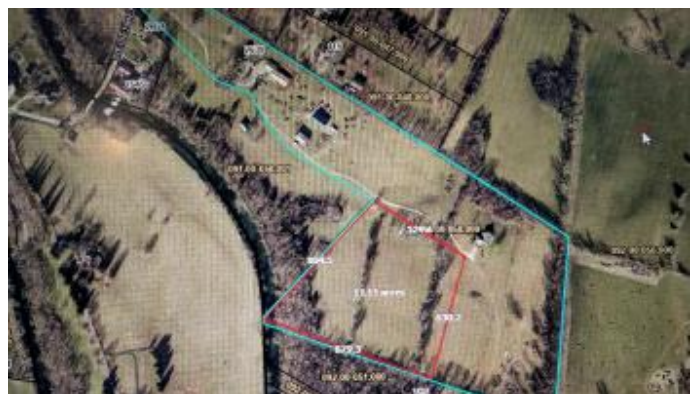
MLS® #25012454

\$528,000

Bedroom, Bathroom,
Farm on 11 Acres

Rural, Midway, KY

A once in a lifetime opportunity to own prime farm land with an incredible homesite awaits. Nestled between downtown Lexington and Midway, this Lot boasts soil of statewide importance, as well as incredible views for your home... all tucked down a private (soon to be paved) driveway. This premier land offering backs up to the Elkhorn Creek, but is high enough ground to have no concerns. Surrounded by boutique horse farms, hay fields, and beautiful new residences, this is land that has not been available for public purchase for over 100 years. Additional acreage up to 18 acres available. Survey to suit.



Essential Information

MLS® #	25012454
Price	\$528,000
Acres	11.00
Type	Farm
Sub-Type	Farm
Status	Active

Community Information

Address	2639 Weisenberger Mill Road
Area	005 - Scott County
Subdivision	Rural
City	Midway
County	Scott
State	KY

Zip Code 40347

Amenities

View Rural, Trees/Woods, Farm

Exterior

Lot Description Wooded, Gentle Sloping

School Information

District Scott County - 5

Elementary Western

Middle Scott Co

High Great Crossing

Additional Information

Date Listed June 12th, 2025

Listing Details

Listing Office Kentucky Land And Home



The data relating to real estate for sale on this website comes in part from the Internet Data Exchange Program of the Bluegrass Realtors Multiple Listing Service. Real estate listings held by IDX Brokerage firms other than RE/Max Properties East are marked with the IDX logo or the IDX thumbnail logo and detailed information about them includes the name of the listing IDX Brokers. Information Deemed Reliable but Not Guaranteed ©2022 Bluegrass Realtors Multiple Listing Service. All rights reserved.