

\$499,000 - 3475 Frankfort Ford Road Tract 2, Wilmore

MLS® #25017044

\$499,000

3 Bedroom, 1.50 Bathroom, 2,600 sqft
Residential on 7 Acres

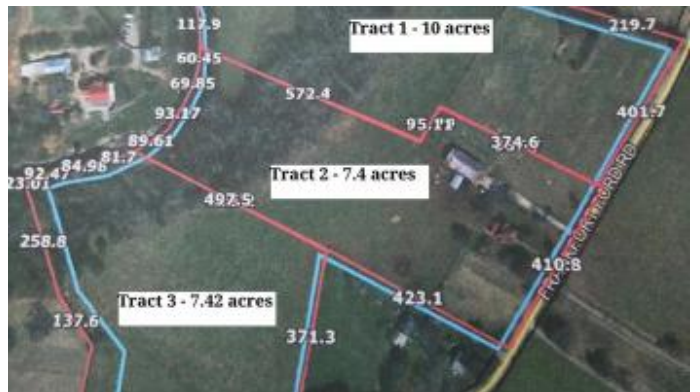
Rural, Wilmore, KY

Discover the endless possibilities at this rare 7.4 acre hobby farm with Jessamine Creek frontage nestled in the heart of Wilmore, Kentucky—one of America's last true Mayberry-style towns. The charming 3 Bedroom, 1.5 Bath brick farmhouse offers classic curb appeal, featuring a newer roof, original wood floors, and a beautiful wood staircase. With some thoughtful renovation, it could become a standout primary residence or income-producing rental. There's a 1-car detached garage and a tobacco barn on the property. Just minutes from downtown Wilmore and a short drive to Lexington, this one-of-a-kind property is a true Bluegrass treasure. Come see this property today!

Built in 9999

Essential Information

MLS® #	25017044
Price	\$499,000
Bedrooms	3
Bathrooms	1.50
Full Baths	1
Half Baths	1
Square Footage	2,600
Acres	7.40
Year Built	9999
Type	Residential
Sub-Type	Single Family Residence
Status	Active



Community Information

Address	3475 Frankfort Ford Road Tract 2
Area	009 - Jessamine County
Subdivision	Rural
City	Wilmore
County	Jessamine
State	KY
Zip Code	40390

Amenities

Utilities	Electricity Connected, Water Connected, Propane
Parking	Detached Garage, Driveway, Off Street
# of Garages	1
View	Rural, Trees/Woods, Farm

Interior

Interior Features	Entrance Foyer, Eat-in Kitchen, Ceiling Fan(s)
Appliances	Refrigerator, Range
Heating	Forced Air, Propane Tank Leased
Cooling	Window Unit(s)
Fireplace	Yes
# of Fireplaces	2
Fireplaces	Living Room, Primary Bedroom
Stories	Two

Exterior

Windows	Blinds
Roof	Metal, Dimensional Style
Construction	Brick Veneer
Foundation	Stone

School Information

District	Jessamine County - 9
Elementary	Wilmore
Middle	West Jessamine Middle School
High	West Jess HS

Additional Information

Date Listed	August 3rd, 2025
-------------	------------------

Listing Details

Listing Office

Rector Hayden Realtors



The data relating to real estate for sale on this website comes in part from the Internet Data Exchange Program of the Bluegrass Realtors Multiple Listing Service. Real estate listings held by IDX Brokerage firms other than RE/Max Properties East are marked with the IDX logo or the IDX thumbnail logo and detailed information about them includes the name of the listing IDX Brokers. Information Deemed Reliable but Not GuaranteedÂ©2022 Bluegrass Realtors Multiple Listing Service. All rights reserved.