

\$499,000 - 3475 Frankfort Ford Road Tract 2, Wilmore

MLS® #25017044

\$499,000

3 Bedroom, 1.50 Bathroom, 2,600 sqft
Residential on 7 Acres

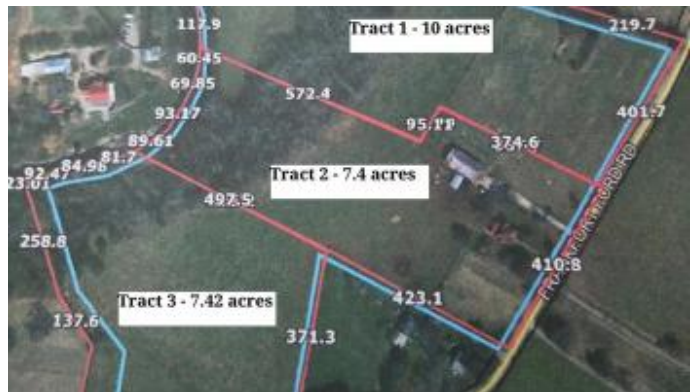
Rural, Wilmore, KY

Discover the endless possibilities at this rare 7.4 acre hobby farm with Jessamine Creek frontage nestled in the heart of Wilmore, Kentucky—one of America's last true Mayberry-style towns. The charming 3 Bedroom, 1.5 Bath brick farmhouse offers classic curb appeal, featuring a newer roof, original wood floors, and a beautiful wood staircase. With some thoughtful renovation, it could become a standout primary residence or income-producing rental. There's a 1-car detached garage and a tobacco barn on the property. Just minutes from downtown Wilmore and a short drive to Lexington, this one-of-a-kind property is a true Bluegrass treasure. Selling as-is. Come see this property today!

Built in 1999

Essential Information

MLS® #	25017044
Price	\$499,000
Bedrooms	3
Bathrooms	1.50
Full Baths	1
Half Baths	1
Square Footage	2,600
Acres	7.40
Year Built	1999
Type	Residential
Sub-Type	Single Family Residence



Status Active

Community Information

Address 3475 Frankfort Ford Road Tract 2
Area 009 - Jessamine County
Subdivision Rural
City Wilmore
County Jessamine
State KY
Zip Code 40390

Amenities

Utilities Electricity Connected, Water Connected, Propane
Parking Detached Garage, Driveway, Off Street
of Garages 1
View Rural, Trees/Woods, Farm

Interior

Interior Features Entrance Foyer, Eat-in Kitchen, Ceiling Fan(s)
Appliances Refrigerator, Range
Heating Forced Air, Propane Tank Leased
Cooling Window Unit(s)
Fireplace Yes
of Fireplaces 2
Fireplaces Living Room, Primary Bedroom
Stories Two

Exterior

Windows Blinds
Roof Metal, Dimensional Style
Construction Brick Veneer
Foundation Stone

School Information

District Jessamine County - 9
Elementary Wilmore
Middle West Jessamine Middle School
High West Jess HS

Additional Information

Date Listed August 3rd, 2025

Listing Details

Listing Office Rector Hayden Realtors



The data relating to real estate for sale on this website comes in part from the Internet Data Exchange Program of the Bluegrass Realtors Multiple Listing Service. Real estate listings held by IDX Brokerage firms other than RE/Max Properties East are marked with the IDX logo or the IDX thumbnail logo and detailed information about them includes the name of the listing IDX Brokers. Information Deemed Reliable but Not GuaranteedÂ©2022 Bluegrass Realtors Multiple Listing Service. All rights reserved.