

\$315,000 - 2767 Bardstown Trail, Waddy

MLS® #26002593

\$315,000

3 Bedroom, 2.00 Bathroom, 1,516 sqft
Residential on 2 Acres

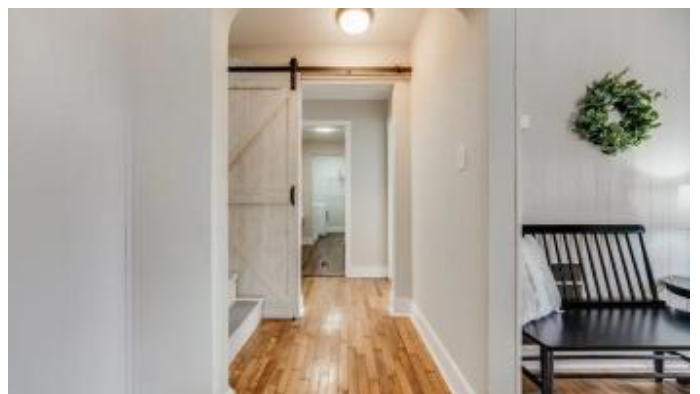
Rural, Waddy, KY

Discover a rare investment opportunity in the heart of bourbon country! This income-producing short-term rental is a cozy, spacious, and bright 3-bedroom, 2-bathroom home offering peaceful views and the perfect setting for guests to relax and unwind. Situated on 2.47 acres overlooking open fields and a tranquil pond, the property also features a backyard patio with a firepit, creating an ideal outdoor space for entertaining and memorable evenings. Inside, you'll find a desirable layout with a first-floor primary bedroom and full bath, complete with a walk-in closet, plus a main-level laundry room for added convenience. The main level offers a welcoming kitchen, dining area, and comfortable family room, perfect for both owner use and guest stays. Upstairs, you'll find two additional bedrooms and a full bathroom, providing plenty of space for guests or extended stays. Whether you're looking to expand your rental portfolio or own a getaway that can generate revenue, this property checks all the boxes. Furniture is negotiable and may be purchased separately through a bill of sale outside of the real estate contract.

Built in 2011

Essential Information

MLS® #	26002593
Price	\$315,000
Bedrooms	3



Bathrooms	2.00
Full Baths	2
Square Footage	1,516
Acres	2.48
Year Built	2011
Type	Residential
Sub-Type	Single Family Residence
Style	Ranch
Status	Active

Community Information

Address	2767 Bardstown Trail
Area	030 - Shelby County
Subdivision	Rural
City	Waddy
County	Shelby
State	KY
Zip Code	40076

Amenities

Utilities	Cable Connected, Electricity Available, Sewer Not Available, Water Connected
View	Rural

Interior

Interior Features	Eat-in Kitchen
Appliances	Dryer, Dishwasher, Microwave, Refrigerator, Washer, Oven
Heating	Heat Pump
Cooling	Central Air
Stories	Two

Exterior

Windows	Blinds
Roof	Shingle
Construction	Vinyl Siding
Foundation	Block

School Information

District	Shelby County - 30
Elementary	Heritage

Middle	East Middle
High	Shelby Co

Additional Information

Date Listed	February 13th, 2026
-------------	---------------------

Listing Details

Listing Office	Homepage Realty
----------------	-----------------



The data relating to real estate for sale on this website comes in part from the Internet Data Exchange Program of the Bluegrass Realtors Multiple Listing Service. Real estate listings held by IDX Brokerage firms other than RE/Max Properties East are marked with the IDX logo or the IDX thumbnail logo and detailed information about them includes the name of the listing IDX Brokers. Information Deemed Reliable but Not GuaranteedÂ©2022 Bluegrass Realtors Multiple Listing Service. All rights reserved.