

\$247,500 - 235 Hillview Lane, Bloomfield

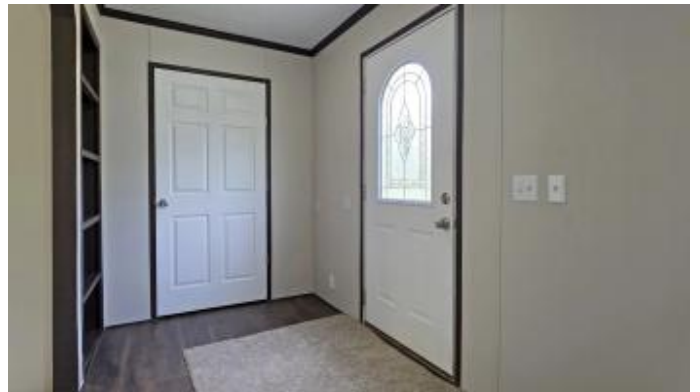
MLS® #26008319

\$247,500

3 Bedroom, 2.00 Bathroom, 2,432 sqft
Residential on 8 Acres

Rural, Bloomfield, KY

Looking for space to spread out without sacrificing comfort or style? This one delivers. Welcome to 235 Hillview Lane in Bloomfield, Kentucky. Situated on 8.15 acres, this 2018-built 76x32 double-wide offers the room, layout, and features buyers are searching for. Step inside and you will immediately notice the open layout that connects the kitchen and main living area, creating a natural gathering space for everyday living or entertaining. The kitchen offers generous cabinet space, a large island, and room to move, making it both functional and inviting. This home features two separate living areas, giving you flexibility for a second family room, media space, or quiet retreat. The stone fireplace adds warmth and character, making it a focal point of the home. With 3 bedrooms, 2 full baths, and a dedicated office, there is space here for work, rest, and everything in between. The large utility and laundry room provides the kind of storage and functionality that is hard to find. The primary suite is designed for comfort, featuring a spacious layout along with a bathroom that includes a double vanity, soaking tub, and separate shower. Step outside and enjoy over 8 acres of land with room to roam, garden, or simply enjoy the privacy of a rural setting. The attached storage area on the left side of the home adds even more practicality for tools, equipment, or hobbies. If you have been looking for a newer home with land, space, and a layout that works for real life, this is one you will want to



see.

Built in 2018

Essential Information

MLS® #	26008319
Price	\$247,500
Bedrooms	3
Bathrooms	2.00
Full Baths	2
Square Footage	2,432
Acres	8.15
Year Built	2018
Type	Residential
Sub-Type	Single Family Residence
Style	Ranch
Status	Active

Community Information

Address	235 Hillview Lane
Area	028 - Nelson County
Subdivision	Rural
City	Bloomfield
County	Nelson
State	KY
Zip Code	40008

Amenities

Utilities	Electricity Connected, Water Connected
Parking	Driveway
View	Rural, Trees/Woods

Interior

Heating	Electric, Forced Air
Cooling	Central Air, Electric

Exterior

Roof	Shingle
Construction	Vinyl Siding
Foundation	Block

School Information

District	Nelson County - 28
Elementary	Bloomfield
Middle	Bloomfield
High	Nelson Co

Additional Information

Date Listed April 18th, 2026

Listing Details

Listing Office Threshold Real Estate Services



The data relating to real estate for sale on this website comes in part from the Internet Data Exchange Program of the Bluegrass Realtors Multiple Listing Service. Real estate listings held by IDX Brokerage firms other than RE/Max Properties East are marked with the IDX logo or the IDX thumbnail logo and detailed information about them includes the name of the listing IDX Brokers. Information Deemed Reliable but Not Guaranteed. ©2022 Bluegrass Realtors Multiple Listing Service. All rights reserved.