

\$25 - 1328 Bardstown Road, Louisville

MLS® #26009312

\$25

Bedroom, Bathroom, 5,000 sqft
Commercial Lease on 0 Acres

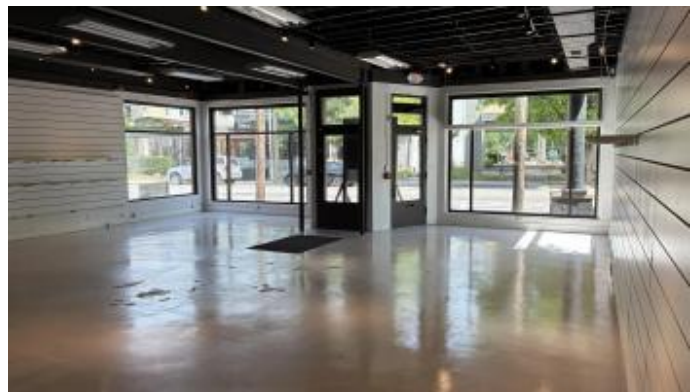
Commercial, Louisville, KY

Retail, Office, or Restaurant opportunity in the heart of The Highlands Entertainment District. The space has excellent visibility on one of the most vibrant blocks of Bardstown Road. The property offers a high visibility retail/restaurant space on Bardstown Road and a ±1,500 SF apartment within the building. Ideal for owner-operators or investors seeking strong exposure with supplemental residential income. Location Description: Located next to the historic Highlands Station 7 firehouse. Property Highlights: -Prime location in the heart of The Highlands Entertainment District with exceptional visibility and steady foot traffic along Bardstown Road -Flexible retail, office, or restaurant space suited for a wide variety of high-demand uses -Purchase includes a +/- 1,500 SF apartment, ideal for owner-occupancy, live/work setup, or additional rental income

Built in 1900

Essential Information

MLS® #	26009312
Price	\$25
Square Footage	5,000
Acres	0.19
Year Built	1900
Type	Commercial Lease
Sub-Type	Retail
Status	Active



Community Information

Address	1328 Bardstown Road
Area	052 - Jefferson County
Subdivision	Commercial
City	Louisville
County	Jefferson
State	KY
Zip Code	40204

Additional Information

Date Listed	April 28th, 2026
Zoning	C-2

Listing Details

Listing Office	Block + Lot Real Estate
----------------	-------------------------



The data relating to real estate for sale on this website comes in part from the Internet Data Exchange Program of the Bluegrass Realtors Multiple Listing Service. Real estate listings held by IDX Brokerage firms other than RE/Max Properties East are marked with the IDX logo or the IDX thumbnail logo and detailed information about them includes the name of the listing IDX Brokers. Information Deemed Reliable but Not Guaranteed©2022 Bluegrass Realtors Multiple Listing Service. All rights reserved.