

\$899,900 - 696 Pea Ridge Road, Stamping Ground

MLS® #26010587

\$899,900

5 Bedroom, 3.50 Bathroom, 3,417 sqft
Residential on 10 Acres

Rural, Stamping Ground, KY

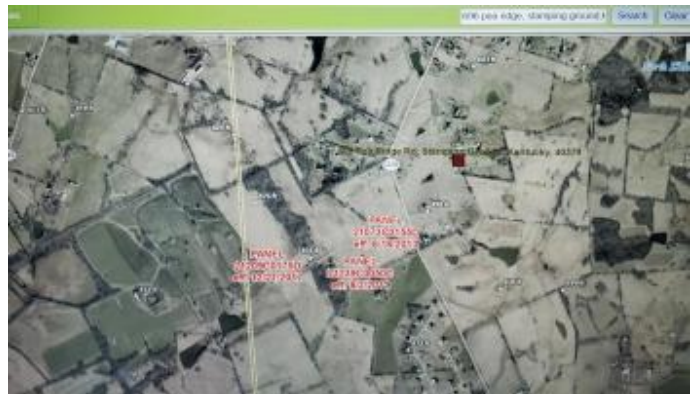
HORSE PEOPLE!, this one is for you! HORSE AMENITIES, realtor.com says this property has a risk of flooding (they are wrong) enter this address

<https://watermaps.ky.gov/riskportal/> and check for yourself, metal 4 stall horse barn, stalls 10x12, 2 stalls have Dutch doors, heated feed room with wash sink and combo lock, tack room with combo lock, wash rack with hot/cold water, heated Varnan waterers in all stalls and one serving three pastures also heated, 4 fenced pastures, fenced arena with great footing, separate large metal hay barn, great view from screened in patio to watch your pastures, some jumps will convey if wanted, all stalls are matted, matts in wash rack and part of breezeway, box fans in stalls, large grass area behind arena to do hill work. HOUSE HIGHLIGHTS, all brick ranch, well maintained, Airbnb/mother-in-law suite in the walkout basement, newer roof (3 years), newer a/c and furnace (3 years), newer water heater (2 years), deep garage (full-size truck will fit), great storage in the basement, Jack and Jill bedrooms on main floor on opposite side of the house from the primary, great storage in the basement.

Built in 2005

Essential Information

MLS® #	26010587
Price	\$899,900



Bedrooms	5
Bathrooms	3.50
Full Baths	3
Half Baths	1
Square Footage	3,417
Acres	10.12
Year Built	2005
Type	Residential
Sub-Type	Single Family Residence
Style	Ranch
Status	Active

Community Information

Address	696 Pea Ridge Road
Area	005 - Scott County
Subdivision	Rural
City	Stamping Ground
County	Scott
State	KY
Zip Code	40379

Amenities

Utilities	Electricity Connected, Water Connected
Parking	Attached Garage, Detached Carport, Driveway
# of Garages	2
View	Farm

Interior

Interior Features	Eat-in Kitchen, Primary First Floor, Ceiling Fan(s)
Appliances	Dishwasher, Microwave, Refrigerator
Heating	Electric, Heat Pump
Cooling	Electric, Heat Pump
Fireplace	Yes
# of Fireplaces	1
Fireplaces	Gas Starter
Stories	One

Exterior

Lot Description	Few Trees
-----------------	-----------

Windows	Insulated Windows, Storm Window(s), Blinds, Screens
Roof	Dimensional Style
Construction	Brick Veneer
Foundation	Concrete Perimeter

School Information

District	Scott County - 5
Elementary	Stamping Ground
Middle	Scott Co
High	Scott Co

Additional Information

Date Listed	May 12th, 2026
-------------	----------------

Listing Details

Listing Office	Coldwell Banker McMahan
----------------	-------------------------



The data relating to real estate for sale on this website comes in part from the Internet Data Exchange Program of the Bluegrass Realtors Multiple Listing Service. Real estate listings held by IDX Brokerage firms other than RE/Max Properties East are marked with the IDX logo or the IDX thumbnail logo and detailed information about them includes the name of the listing IDX Brokers. Information Deemed Reliable but Not Guaranteed ©2022 Bluegrass Realtors Multiple Listing Service. All rights reserved.